



MEDICAL AESTHETICS

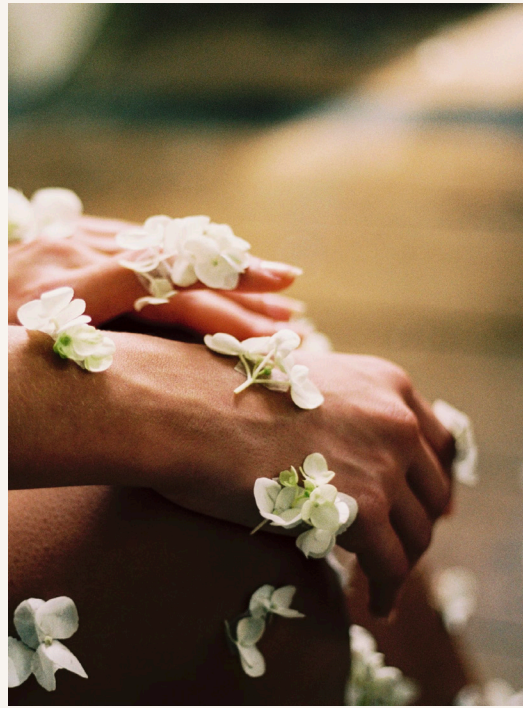


---

AESTHETICS  
MENU

---

# LIVE YOUR BEST SELF



## OPTIMAL FACIAL . . . . . \$190

The Optimal Facial is designed to relax, rejuvenate and leave your skin feeling refreshed! It begins with a gentle cleanse, followed by an enzyme peel and calming steam. You will then be dermaplaned to remove dead skin cells and peach fuzz.

### How many treatments are needed?

Facial treatments are recommended every 3-6 weeks, depending on skin type.

### What is the downtime?

None.

### What is the aftercare?

Follow your custom home care regimen to maintain benefits between treatments.

## HIGH FREQUENCY FACIAL . . \$100

*\*add on Eliza's gentle dermaplaning . . . . . \$30*

Our High Frequency Facial is designed to treat active acne breakouts, acne scars and enlarged pores as well as provide a deep clean. The purpose of our high frequency device is to oxygenate the skin and kill bacteria on contact so that new breakouts don't form. This facial is perfect for anyone struggling with chronic acne! It includes a deep double cleanse, a SkinMedica calming mask, a steam treatment, LED light therapy and a relaxing massage to soothe away tension. This facial will help improve the overall texture and tone of your skin and leave you glowing!

## EXPRESS FACIAL . . . . . \$75

This 30 minute express facial is perfect for those with time constraints or for someone looking for a quick weekday refresher. This facial will include a double cleanse, dermaplaning and Revision's Papaya Illuminating Enzyme mask to brighten and hydrate your skin. This mask contains papain and bromelain to gently exfoliate dead skin cells to improve skin texture. This is the perfect facial for someone always on the go!

## NANO-NEEDLING HYDRATION FACIAL . . . . . \$215

Microneedling with the MD Pen Refine Nano Needle helps to smooth and lift the skin while leaving it instantly more hydrated and plump. The Nano Needle safely and comfortably creates thousands of micro-channels in the skin, preparing it for the infusion of one of our serums by Hydrinity, Epicutis, or Enfinity. No numbing is needed, and you look amazing right away! This facial will include a double cleanse, dermaplaning, calming steam, and a customizable mask leaving your skin feeling moisturized, plump and refreshed.



## DERMAPLANING . . . . . \$50, \*add-on to another service . . . . . \$35

One of the trendiest hair-removal options, which is performed using a scalpel to manually exfoliate dead skin cells from the face. This treatment requires the use of a sterile surgical scalpel to gently remove the top layer of the skin, dead skin layer and the peach fuzz. This treatment will make your skin's surface smooth, youthful, and radiant. Great in combination with other treatments like Hydrafacial or Microneedling.

### How many treatments are needed?

Dermaplaning can be done every 4 to 6 weeks.

### What is the downtime?

None.

### What is the aftercare?

Follow your custom home care regimen to maintain benefits between treatments.

## LIGHTWAVE™ LED LIGHT THERAPY

**\$35-\$50 PER SESSION, packages available**  
LightWave's patented Red, Infrared, & Blue Light therapy can dramatically revitalize your skin without any downtime or discomfort. Our innovative aesthetic treatments help counteract years of sun damage, environmental damage, aging, acne, and acne scarring. LIGHTWAVE provides noticeable results, often in a couple of treatments, without the high cost and downtime of other, more expensive options.

### How many treatments are needed?

LED light is best performed twice a week until improvement is seen, then maintained as often as desired.

### What is the downtime?

None. Skin MAY feel sensitive or tingly immediately after, but typically very little to no erythema occurs. It gives a glow.

### What is the aftercare?

A consistent home-care regimen and UVA/UVB sunscreen is strongly recommended to achieve and maintain desired effects.

## VI PEEL . . . . . \$300

The VI peel offers six uniquely formulated peel treatments that are designed to lift pigment, remove sun damage, alleviate acne and scarring and fight line lines. These are painless medium-depth peels that are safe for all skin types! Whether you are seeking to give your self-image a boost through brightening of your complexion, are preparing for a major life event or simply wish to sweep away the damage left from a summer of outdoor indulgence, we have the right one for you.

### How many treatments are needed?

Chemical Peels are recommended every 4-6 weeks for a series of treatments.

### What is the downtime?

Depending on the strength and ingredients, downtime is anywhere from 1-10 days.

### What is the aftercare?

A gentle cleanser and sunscreen is recommended until peeling subsides. Proper home-care is also strongly suggested between treatments.

## THE SKIN CLASSIC

Up to 30 minutes . . . . . \$250

30 to 60 minutes . . . . . \$350

Up to 15 minute add-on to another service . . . . . \$75

The Skin Classic is a laser alternative treatment for common skin conditions such as visible capillaries, cherry angiomas, seborrheic keratosis, skin tags, sun spots, milia, sebaceous hyperplasia, large blackheads, and certain types of acne. It uses high-frequency electrical current to treat these epidermal irregularities and can be used on the face, neck, chest, back and arms. The Skin Classic treatment can be done as a stand alone session, or added on to other services such as a Hydrafacial or Microneedling.

### How many treatments are needed?

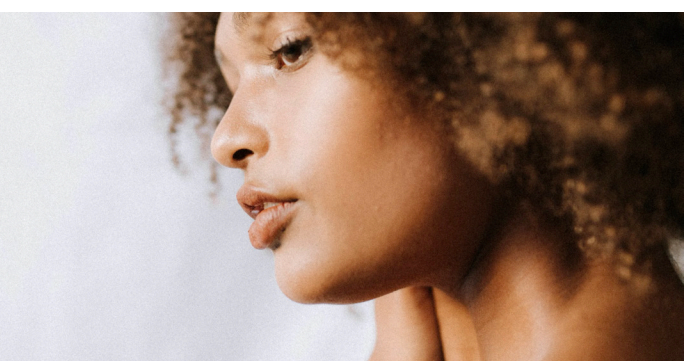
Usually just one treatment is needed.

### What is the downtime?

Depends on the type of irregularities treated. Treated areas are crusted for 7-10 days, and may be pinkish while healing for up to 30 days.

### What is the aftercare?

A gentle cleanser and sunscreen are required until areas are completely healed.



## HYDRAFACIAL

Signature 30 minutes . . . . . \$199,

45 minutes (with boosters) . . . . . \$295

60 minutes (with lymphatic drainage) . . . . . \$325

Get ready to see what's been clogging your pores, with a revolutionary facial treatment technique that cleans very deeply and hydrates the skin! The Hydrafacial Technique uses a patented vortex system that easily dislodges and removes impurities while simultaneously delivering maximum hydration. Its many benefits include a more hydrated, bright, plump, and clear complexion. Plus, it reduces fine lines and wrinkles, increases firmness, evens tone, texture, and brown spots, as well as reducing enlarged pores. Hydrafacial brings back that glow, with no downtime and immediate results!

### How many treatments are needed?

For best results, monthly treatments are recommended.

### What is the downtime?

None.

### What is the aftercare?

Follow your custom home care regimen to maintain benefits between treatments.

## HYDRAFACIAL KERAVIVE HAIR & SCALP REJUVENATION

Package of 3 . . . . . \$1500

3-step treatment: Cleanse+ Exfoliate + Infusion. Relaxing, painless suction and hydration removes dirt, oil, and dead skin, and cleanses hair follicles. Hydrate + Nourish: Optimized delivery of a proprietary blend of 5 bio-mimetic growth factors and 2 skin proteins, and a take-home topical scalp peptide treatment to use for 30 days.

### How many treatments are needed?

Three treatments are recommended spaced 4 weeks apart, followed by one yearly maintenance treatment.

### What is the downtime?

Hair is damp immediately afterwards, but can be lightly dried if desired. It is recommended that you not wash your hair until the following day.

### What is the aftercare?

Daily use of the HydraFacial Keravive Peptide Complex Spray enhances your in-office treatment and delivers daily hydration and nourishment to your scalp and hair follicles.

## MICRONEEDLING

Face \$515 / 3 treatment package \$1400

Face & Neck \$600 / 3 treatment package \$1600

Known as Collagen Induction Therapy (CIT), this procedure uses tiny needles to pierce the skin hundreds of times per second. These tiny micro-channels also create a natural wound healing response that can effectively treat skin tone/texture/laxity, acne scarring, pigmentation disorders, and various other skin issues. It can also effectively regenerate hair follicles for fuller, thicker hair in both men and women.

### How many treatments are needed?

4-6 treatments are typically recommended, spaced 4 weeks apart, then once a year to maintain.

### What is the downtime?

There may be slight pinpoint bleeding. Skin may feel red and tight for 24-48 hours post treatment, and some mild flaking will occur for 5-7 days post-procedure.

### What is the aftercare?

Micro-channels are open for 7-8 hours after treatment, so nothing except the initial applied serum and take-home spray should be used. Routine skincare regimen can be resumed the next day.

## STELLAR M22

Pricing based on areas treated \$500 - \$3000

Our most powerful modular multi application platform offers the most advanced intelligent treatment of hyperpigmentation, tattoo removal, acne, rosacea, vascular lesions and more. As well as fractional skin rejuvenation to improve skin texture and photofractional facials which combine the sequential treatment of IPL and ResurfX to address both texture and tone, for an overall improved skin appearance.

### How many treatments are needed?

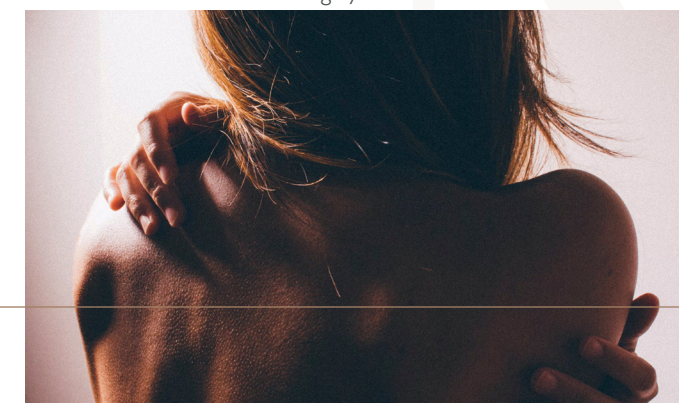
3 treatments are typically recommended, spaced 4 to 6 weeks apart, then once a year to maintain.

### What is the downtime?

Skin may feel red and tight for 24-48 hours post treatment, and some mild swelling, discoloration or flaking may occur for 3-7 days post-procedure.

### What is the aftercare?

Aftercare depends on the combination of therapies you receive, but may include topical serums or masks to speed healing and enhance results. Sunscreen is highly recommended.



## MICRONEEDLING ADD-ONS

Platelet-Rich Plasma (PRP) . . . . . \$400

Your own plasma, enriched with platelets! Enhance the positive effects of microneedling with growth factors that stimulate stem cells. Studies have shown that PRP can expedite the healing process of tissues and reduce the appearance of unwanted signs of aging. PRP treatment involves using the patient's own blood as a resource to isolate the platelets with a centrifuge. PRP contains proteins and several growth factors that regulate and activate cell migration and stimulate the regeneration of the tissue that can be used on face or scalp.

Vitti Cosmetics Cryo-Elixir . . . . . \$600

Our Natural Biologic Therapy from donated placental tissue helps the body boost its ability to heal itself. Responsibly sourced birth tissue allografts are helping people of all ages to effectively delay the onset of skin aging. This is done by encouraging the development of fibroblast cells, which are crucial to maintaining skin elasticity and strength. Similar to PRP in effect, but more potent and without the need for a blood draw!



Provoque Cellular Activating Serum

Per milliliter . . . . . \$350

Growth factor serum from skin progenitor cells speeds healing and dramatically improves results at a great price point. Can be applied topically or microneedled or derma-stamped in to skin or scalp.

## ELLACOR

**Consultation required.** The Ellacor is the first and only FDA cleared procedure to non-surgically remove excess skin. This micro-coring procedure is our non-surgical solution for the treatment of moderate to severe wrinkles and facial/jowl laxity. This treatment offers visible natural looking results without the evidence of scarring associated with a traditional facelift.

Single . . . . . \$3200

Package of 2 . . . . . \$6000

## FOLIX

Our first to the market, FDA cleared, revolutionary non-ablative fractional laser system using hair stimulation technology. This device eliminates the need for anesthesia and needles and is virtually painless! This approximately 30 min procedure offers zero downtime and noticeable results in 4 to 6 weeks.

Pricing based on # of treatments . . . . . \$1,000-\$6,000



## SCULPTRA / RADIESSE

Pricing based on number of treatments . . \$800 - \$3000

These are collagen biostimulators used for restoring lost volume and restructuring the soft tissues of the face. Results can last up to 2 years. These can be used in the face, hands, and other parts of the body.

### How many treatments are needed?

A series of 3 to 6 treatments spaced 6 to 8 weeks apart.

### What is the downtime?

Mild swelling and some bruising are expected. Results begin to appear after 3 to 6 weeks.

### What is the aftercare?

Sculptra requires massage to fully activate the effects. . Arnica can be used to minimize bruising. An oral, over-the-counter anti-inflammatory or analgesic may be taken to reduce discomfort.

## LASER HAIR REDUCTION WITH SOPRANO ICE

Pricing based on area treated, and includes 6 treatments per area . . . . . \$500-\$3000

The latest generation of the award-winning Soprano laser hair removal system. Soprano ICE is used by advanced hair removal clinics and leading physicians around the world. Using a proprietary cooling laser head and continuous (vs. “stamping”) motion, it is virtually painless, really fast, and works on ALL skin types!

### How many treatments are needed?

Most people achieve desired results from 4-6 treatments. Touch ups are advised every 6-12 months.

### What is the downtime?

Mild redness may be apparent in more sensitive areas.

### What is the aftercare?

No specific aftercare required.

## HYALURONIC ACID FILLERS

Juvederm, Versa, Restylane.....\$800 to \$1000 per syringe

Hyaluronic acid is a naturally occurring substance that can be injected in various layers of the epidermis to smooth the skin, plump various areas that lack a youthful appearance, and reshape and lift the face.

### How many treatments are needed?

Most patients report a lasting effect of 9-15 months depending on type used. There are beneficial lasting effects on collagen remodeling and long-term rejuvenation.

### What is the downtime?

Very little. Some patients may notice slight redness and swelling at injection site, less common effects include mild bruising, especially around lips and eyes. Pre-medicating with Arnica will help minimize bruising and swelling.

### What is the aftercare?

Ice is encouraged pre and post injection to minimize bruising and swelling. Immediate improvement will be noticeable, but full results are seen at two weeks.

## NEUROMODULATORS

Botox/Dysport/Jeuveau.....\$10 to \$14 per unit

Neurotoxins paralyze the muscles of facial rhytids (wrinkles) to eliminate the ability to use them. This gives the skin a smoother appearance, most commonly between the eyebrow, in the forehead and on the outer corners of the eyes (crows feet).

### How many treatments are needed?

Most patients report a lasting effect of 3-6 months.

### What is the downtime?

Very little. Some patients may notice slight redness and swelling at injection site, less common effects include mild bruising. Premedicating with Arnica will help minimize bruising and swelling.

### What is the aftercare?

Ice is encouraged pre and post injection to minimize bruising. Full effect of neurotoxin is noticed at 14 days post injection.

## NATURAL BIOLOGICS THERAPY

Natural biologics like growth factors, stem cells and exosomes can be used in many aesthetics procedures we offer to enhance and magnify your results. We partner with only FDA registered labs to procure the best products available. Products range from amniotic and placental growth factors to stem cells and exosomes. See our Natural Biologics web page for more information.

### Products available from Vitti Labs:

Vittipure . . . . .Injectable PRP alternative for many applications

Cryo-Elixir . . . . .placental derived growth factors for topical use

### Products available from Levellis:

Provoque Cellular Activating Serum

*\*Price based on procedure and product used*

## DEOXYCHOLIC ACID INJECTIONS

### Kybella

A treatment with multiple small injections of a naturally occurring acid that permanently dissolves fat in areas where it’s injected. Commonly used for fat that accumulates under the chin (sub-mental area). Each treatment is approximately 20 minutes and the exact number of injections is dependent on how much fat there is.

### How many treatments are needed?

2-4 treatment sessions 4-6 weeks is recommended, with no more than 6 treatments total.

### What is the downtime?

Immediate redness and swelling at the injection site is expected and may last up to two weeks.

### What is the aftercare?

None. Full results are expected 8-12 weeks following the final injection.

## IN-OFFICE LIPOSUCTION

Designed to target small areas of fat accumulation, this procedure is done in the office by Dr. Shawn under light sedation and local anesthetic and does not require general anesthesia. The fat extracted may be used to augment other areas in lieu of HA filler (lips, cheeks, nasal labial folds, etc.). This procedure requires a surgical consultation with the plastic surgeon to make sure you are a good candidate.

### How many treatments are needed?

One.

### What is the downtime?

Approximately 6 weeks of swelling with use of compression garment. Bruising may occur for up to 2 weeks.

### What is the aftercare?

Suture removal 7-10 days post-op. Consistent compression garment use for 4-6 weeks.



309 East Stone Ave  
Greenville, SC 29609

---

864.214.5232  
office@optimalselfmd.com

---

OPTIMALSELFMD.COM